



DATE:08/12/2023	Model Examination 1[2023-2024]	Max Marks - 80
GRADE - X	ENGLISH (184) (Language and Literature)	TIME - 3 Hours

General Instructions:

1. 15-minute prior reading time allotted for Q-paper reading.
2. The Question Paper contains THREE sections-READING, GRAMMAR & WRITING and LITERATURE.
3. Attempt questions based on specific instructions for each part.

Q. No	Questions	Marks
	SECTION A- READING SKILLS (20 marks)	
I.	Read the passage given below.	
	1. The problem of the conservation of historical monuments (statues, columns, ancient buildings) requires an accurate study of the many environmental agents which bring about the deterioration process and affect the actual rate of deterioration. Among the most active causes of weathering, we can cite : (i) the weakening of the outer layer of the art work, which is caused by complex microphysical effects and is in particular due to wetting of the outer layer of the artwork (a comparison between the effects of rainwater and condensation is made); (ii) the chemico-physical action of pollutants captured in both the dry and wet phase.	
	2.The destructive processes depend on many factors: the past history of the monument, the capture and nature of the pollutants, and the frequency of some microclimatic conditions, particularly those supplying the water necessary for chemical reactions. To this end studies of diurnal and seasonal variations on the monument of both the heat wave and the fluxes of moisture and energy are very important.	
	3. Some of these processes have been shown with microclimatic studies and microphysical investigation associated with mineralogic and chemical analyses of samples of weathered material.	

	Mathematical models in some cases (especially for solar radiation and temperature) permit physical simulation, reconstruction of past data and extrapolation into the future observation of many monuments from different epochs; situated at various sites, gives examples of the fundamental processes that are often associated with, or masked by, other effects.	
	4. The main weathering processes are due to the combined action of rainwater and atmospheric pollutants (particularly the carbonaceous particles due to combustion) deposited on the surface of the monument. The way in which the surface is wetted is very important : in fact, a short drizzle can activate the dry deposit without washing it away, and in this case the pH of rain droplets is of secondary importance; on the other hand, showers supply abundant water which favours dissolution of the stone and removal of the solute, resulting in a thinning of the original rock. Another important factor is the dynamic regime (i.e. laminar or turbulent) of the water flowing over the surface of the monument.	
	5. In zones where the surface of marble or calcareous monuments is only wetted, but protected from runoff, black crusts (characterized by crystals of gypsum and calcite with carbonaceous particles embedded in the crusts) are formed. Zones subjected to heavy runoff are also subjected to a thinning of the rock and small authentic calcite crystals form that are white in appearance.	
	6. In the case of relatively unpolluted towns, where marble and limestone sulphation is not the main cause of the deterioration process, biological deterioration mechanisms are often very important, due to the activity of epilithic and endolithic microflora and microfauna.	
	7. The case of particularly precious mortars, e.g. murals or frescoes, is discussed in order to clarify the thermodynamic method proposed for the analysis of experimental campaigns. Finally actions are described that act on the causes and not only on the effects.	
	Based on your understanding of the passage, answer the questions given below. i. List any two factors on which the destructive processes of historical monuments depend. 1. _____ 2. _____	10x1=10 marks
	ii. The problem of the conservation of historical monuments requires:	

	<p>(a) an understanding of the deterioration process. (b) an accurate study of the many environmental agents. (c) an accurate assumption of effects of rainwater. (d) an understanding of the effects caused by the chemico-physical action of pollutants.</p>	
	<p>iii. The main weathering processes of the monument are caused due to the deposition of _____ on the surface of the monument. (a) gypsum and calcite with carbonaceous particles (b) the heat wave and the fluxes of moisture and energy (c) pollutants which weaken the art work (d) the combined action of rainwater and atmospheric pollutants</p>	
	<p>iv. What favours the dissolution of the stone and removal of the solute, resulting in a thinning of the original rock?</p>	
	<p>v. To understand the destructive process of a monument it is very important to study the : (a) moisture deposited on the monument yearly. (b) understand the variations of heat affecting the monument. (c) diurnal and seasonal variations on the monument. (d) fluxes of energy experienced by the monument.</p>	
	<p>vi. Fill in the blank by selecting the correct option. Zones that experience _____ are also subjected to a thinning of the rock and small authentic calcite crystals form that are white in appearance on the monument. (a) extreme air pollution (b) acid rainfall (c) harsh winds (d) heavy run-off</p>	
	<p>vii. Which of the following will be the most appropriate title of the passage ? (a) Deterioration Process of Historical Monuments (b) Monuments and their Deteriorations (c) The Legacy of Monuments (d) The Science of Deterioration</p>	
	<p>viii. Complete the following analogy correctly with a word/phrase from paragraph 2: tree : sap :: hydrant : _____ (Clue : Just like a tree is a source of sap, similarly a hydrant is a source of...)</p>	
	<p>ix. State whether the following statement is TRUE or FALSE: When talking about weathering processes, the way in which the surface is wetted is very important.</p>	

	<p>x. Substitute the word 'weathering' with ONE WORD similar in meaning, in the following sentence from paragraph 4: The main weathering processes are due to the combined action of rainwater and atmospheric pollutants...</p>	
<p>II. Read the passage given below.</p>	<p>1. The ocean is one of the most unexplored parts of our planet, with a magnitude of undiscovered species and mysteries. It turns out from the studies conducted over the last few decades, this magnificent environment is under serious threat from human intervention, with plastics set to outnumber fish by 2050.</p>	
	<p>2. Marine life, as we know it, is suffering irreparable damage from the chemical pollution of the waters and the millions of tons of mismanaged waste dumped in the oceans each year. The result is a planetary crisis with over 100 million marine animal's lives get lost every year, and the decay of the ocean's ecosystem.</p>	
	<p>Shocking Ocean Pollution Statistics:</p> <ul style="list-style-type: none"> • 100 million marine animals die each year from plastic waste alone. • 100000 marine animal die from getting entangled in plastic yearly - this is just the creatures we find. • 1 in 3 marine mammal species get found entangled in litter, 12-14000 tons of plastic are ingested by North Pacific fish yearly. • In the past 10 years, we've made more plastic than the last century. By 2050, the pollution of fish will be outnumbered by our dumped plastic. • The largest trash site on the planet is the Great Pacific Garbage Patch, twice the surface area of Texas, it outnumbers sea life there 6 to 1. • China is ranked #1 for mismanaged waste and plastics. However, the US is in the top 20 with a more significant waste per person contributions. • 300 Million tons of plastic gets created yearly, and this weighs the same as the entire human population, and 50% is single-use only. • There are 5.25 trillion pieces of plastic waster estimated to be in our oceans. 269000 tons float, 4 billion microfibers per km2 dwell below the surface. • 70% of our debris sinks into the ocean's ecosystem, 15% floats and 15% lands on our beaches. • In terms of plastic, 8.3 million tons are discarded in the sea yearly. Of which, 236000 are ingestible microplastics that marine creatures mistake for food. • Plastics take 500-1000 years to degrade; currently 79% is send to lands or the oceans, while only 9% is recycled, and 12% gets 	

	<p>incinerated.</p> <ul style="list-style-type: none"> • 1950-1998 over 100 nuclear blast tests occurred in our oceans. • 500 marine locations are now recorded as dead zones globally, currently the size of the United Kingdom's surface (245000 km²) • 80% of global marine pollution comes from agriculture runoff, untreated sewage, discharge of nutrients and pesticides. • 90% of the worldwide ocean debris comes from 10 rivers alone. 	
	<p>3. Almost 1,000 species of marine animals get impacted by ocean pollution, and we now have over 500 locations recorded as dead zones where marine life cannot exist. How did this happen, what is causing the most damage, find out everything above in the marine pollution statistics round-up.</p>	
	<p>4. The Great Pacific Garbage Patch is a floating island of debris, accumulated in the North Pacific Ocean by an extensive system of currents called gyres. It is built up from two other waste patches, the western garbage patch near Japan and the eastern garbage patch near America's west coast near California and Hawaii.</p>	
	<p>5. The North Pacific Subtropical Convergence Zone links the east and western garbage patches, acting as a highway for waste to move from one to the other. Because of this, a small item of debris dropped near California can travel across to Japan, then eventually get sucked up by these swirling garbage patch vortexes.</p>	
	<p>6. The great pacific garbage patch size is quite shocking. These patches of trash are said to be twice the size of Texas and float on the surface but do drop several meters into the ocean in places, which makes the correct size challenging to measure. The world's largest garbage site is mainly made up of microplastics creating a vast cloud, with newer items of debris that haven't broken down as much floating around like chunks in a soup. The great pacific garbage patch effects on marine life are extremely significant.</p>	
	<p>Based on your understanding of the passage, answer the questions given below.</p> <p>i. Infer one reason for the following, based on information in or around paragraph 5: A small item of debris dropped near California can travel across to Japan.</p>	10x1= 10 marks
	<p>ii. According to the passage, what is set to outnumber the fish in the ocean by the year 2050? (a) pollution (b) garbage (c) plastics (d) human waste</p>	
	<p>iii. The largest trash site on the planet, the Great Pacific Garbage Patch, is twice the size of which city? (a) Arizona (b) Florida (c) Colorado (d) Texas</p>	

	<p>iv. Which country is ranked number one for mismanaged waste and plastics?</p> <p>v. Which of the following is not a place from where 80% of global marine pollution comes?</p> <p>(a) agriculture run-off (b) untreated sewage (c) discharge of nutrients and pesticide (d) factory waste disposal</p>	
	<p>vi. State whether the following statement is TRUE or FALSE: 700 marine locations are now recorded as dead zones globally.</p>	
	<p>vii. Fill in the blank by selecting the correct option: An extensive system of currents in the North Pacific Ocean is called_____.</p> <p>(a) debris (b) vortex (c) convergence (d) gyres</p>	
	<p>viii. Substitute the word 'irreparable' with ONE WORD similar in meaning, in the following sentence from paragraph 2: Marine life, as we know it, is suffering irreparable damage from the chemical pollution of the waters...</p>	
	<p>ix. Choose an option that is an antonym of the word 'unexplored'?</p> <p>(a) known (b) undiscovered (c) irrelevant (d) unimportant</p>	
	<p>x. Based on your understanding of the text, list 2 reasons for the following: Marine life is suffering from irreparable damage.</p> <p>1. _____ 2. _____</p>	
III.	<p style="text-align: center;">SECTION B- GRAMMAR (10marks)</p> <p>Attempt ANY TEN of the following questions.</p> <p>i. Fill in the blank by choosing the correct option to complete the sentence.</p> <p>The bridge is being_____at the moment so it can't be used.</p> <p>(a) repaired (b) repairing (c) repair (d) repairs</p>	10x1= 10 marks
	<p>ii. Read the conversation between Raman and Anitha. Complete the sentence by reporting Anitha's reply correctly.</p> <p>Raman : What's the matter, Anitha?</p> <p>Anitha : Oh, nothing. You cannot help me. I only want that blue umbrella.</p> <p>Raman asked Anitha what the matter was. She replied that it was nothing and he could not help her as_____.</p>	
	<p>iii. Select the correct option to fill in the blank for the given line.</p> <p>_____I suggest a slight change in your plan?</p> <p>(a) May (b) Would (c) Must (d) Will</p>	

iv. Select the option that identifies the error and supplies the correction for the following line: The people of India show remarkable unity at the time of Kargil Conflict.

Option No.	Error	Correction
(a)	time	times
(b)	conflict	conflicts
(c)	show	showed
(d)	The	A

v. Complete the given sentence, by filling in the blank with the correct option : When I was a child, I _____ to school every day instead of going by cycle.

- (a) walked (b) have been walking
(c) had walked (d) have walked

vi. Fill in the blank by using the correct form of the word in the bracket.

Many a student _____ (try) hard to pass his entrance exam.

vii. Report the dialogue between Gardener and Dev, by completing the sentence :

Gardener: Did you water the plant today?

Dev: No, but I will, today.

Gardener: Then tomorrow I will get a sapling of sunflower.

The Gardener asked Dev if he had watered the plant that day. Dev replied negatively but said he would that day. Then the gardener said that _____

viii. Identify the error in the given sentence and supply the correction.

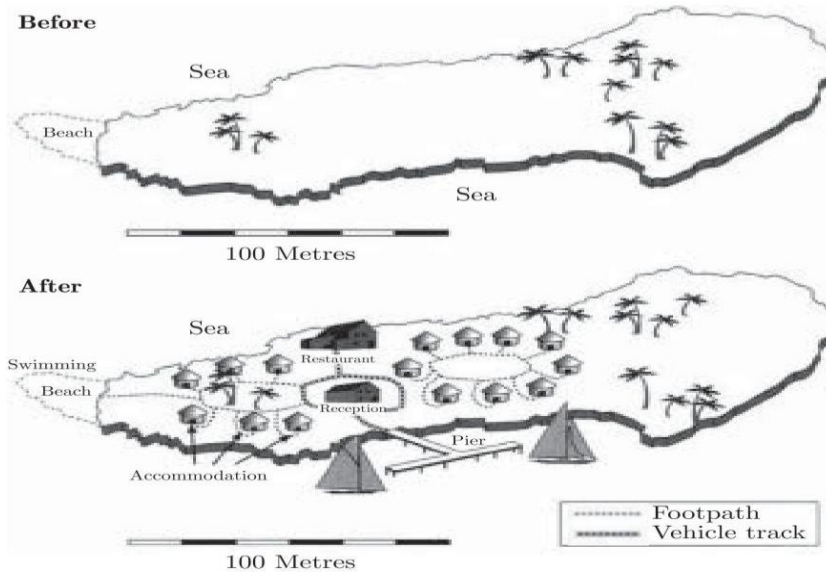
Diwali, well known as the festival of lights, is a festival that is celebrate in almost all parts of India.

Use the given format for your response.

Error	Correction

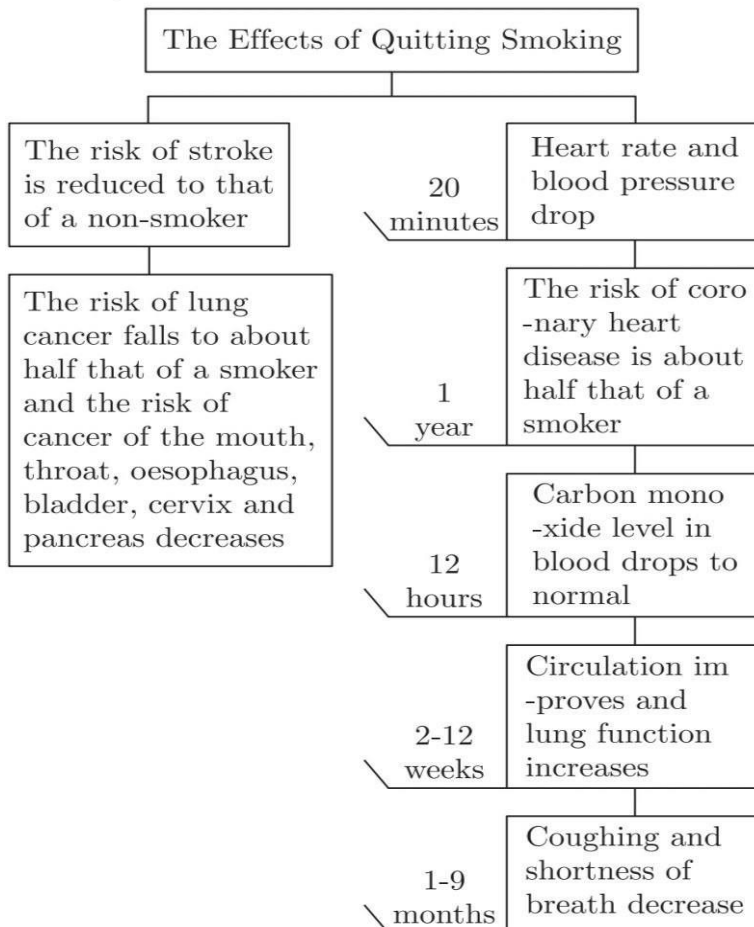
	ix. Transform the following direct speech into reported speech: The beggar said to the old man, "Can you tell me the way to the nearest temple?"					
	x. Fill in the blank by choosing the correct option. You have a large number of shirts. You _____ buy any more. (a) need not (b) can not (c) would not (d) should not					
	xi. Rohit and Rajat are discussing their plans for the weekend. Complete the dialogue below by choosing the correct option. Rohit : How do you like the idea of going to the zoo? Rajat : That sounds good, But I _____ my parent's permission. (a) needs to take (b) need not to take (c) needs not to take (d) need to take					
	xii. Identify the error in the given sentence and supply the correction. At the age of seventeen, Galileo know that he had discovered an important law- a law of a pendulum. Use the given format for your response. <table border="1" data-bbox="204 954 1326 1093"> <tr> <td data-bbox="204 954 762 1025">Error</td> <td data-bbox="762 954 1326 1025">Correction</td> </tr> <tr> <td data-bbox="204 1025 762 1093"></td> <td data-bbox="762 1025 1326 1093"></td> </tr> </table>	Error	Correction			
Error	Correction					
IV.	<p>SECTION B- CREATIVE WRITING SKILLS (10marks)</p> <p>All the names and addresses used in the questions are fictitious. Resemblance, if any, is purely coincidental.</p> <p>Attempt ANY ONE from A and B given below.</p> <p>1A. Write a letter to the editor of a newspaper highlighting the problem of traffic jam near Chinpumi Temple Crossing and suggesting some remedy for it.</p> <p style="text-align: center;">Or</p> <p>1B. You are Neelam/Rakesh, Store Incharge Diksha Stores, 32/54, Rajeev Nagar, Delhi. Your school requires school bags and accessories in bulk for the commencement of the new session. Write a letter of inquiry to the Sales Manager, Sky Bags Industries Ltd. 15/3, Ravi Nagar, Delhi enquiring about the details of goods manufactured.</p>	5 marks				
	<p>Attempt ANY ONE from A and B given below.</p> <p>2A. The two maps below show an island, before and after the construction of some tourist facilities. Write an analytical paragraph in 100-120 words by selecting and reporting the main features, and making comparisons where relevant. (Diagram given in the next</p>	5 marks				

page).



Or

2B. Study the concept chart from a recent study by WHO that has described some positive effects of quitting smoking.



Write an analytical paragraph in 100-120 words, analysing the given information.

SECTION C- LITERATURE (40marks)

V. Reference to the Context.

Attempt ANY ONE of two extracts given.

1.A "Paper has more patience than people' I thought of this saying on one of those days when I was feeling a little depressed and was sitting at home with my chin in my hands, bored and listless, wondering whether to stay in or go out. I finally stayed where I was, brooding: Yes, paper does have more patience, and since I'm not planning to let anyone else read this stiff-backed notebook grandly referred to as a 'diary', unless I should ever find a real friend, it probably won't make a bit of difference." (From the Diary of Anne Frank)

5x1 = 5 marks

i. 'Paper has more patience than people.' What does this imply?

ii. Pick out the emoticon which clearly brings out the meaning of 'listless' as used in the extract?



(i)



(ii)



(iii)



(iv)

(a) Option (i)

(b) Option (ii)

(c) Option (iii)

(d) Option (iv)

iii. Infer one reason for the following, based on information in extract: Anne doesn't plan to let anyone else read her diary.

iv. If the diary were a 'real friend', what qualities would Anne expect it to have? Pick the option that lists these correctly.

1. optimistic 2. good listener 3. confidant 4. energetic
5. non-judgemental 6. outgoing 7. ambitious

(a) 1 and 4

(b) 5, 6 and 7

(c) 2, 3 and 5

(d) 3 and 7

v. Pick out the sentence that brings out the meaning of 'brooding' as used in the extract?

- (a) The mysterious house on the hill is still brooding above the village.
(b) The people at the stock market always keep brooding about the gains.
(c) He was brooding over the matter and took a long time to decide.
(d) Suspense and drama were brooding at the site of the investigation.

	OR	
	<p>1.B I think he knew I made a little money this way but he did not seem to mind. Anil made money by fits and starts. He would borrow one week, lend the next. He kept worrying about his next cheque, but as soon as it arrived, he would go out and celebrate. It seems he wrote for magazines - a queer way to make a living! (The Thief's Story)</p>	5x1= 5 marks
	i. Complete the following with a phrase from extract:	
	ii. The information in the extract suggests that Anil could be a (a) salaried professional (b) freelancer (c) business man (d) volunteer	
	iii. Complete the following analogy correctly with a word/phrase from extract: lose : find :: lend : _____ (Clue : Just like lose is antonym of find, similarly lend is antonym of...)	
	iv. The reference to making a little money 'this way' refers to a way that is viewed by most people as (a) sensible (b) inappropriate (c) charitable (d) Aggressive	
	v. Based on your understanding of Anil in the extract, choose the option that synchronises with his thinking. (a) So what if I don't have much money? Giving it to that person is important as they could do with a helping hand. (b) I better learn how to protect my money. I think I'm being looted. (c) I earn money with such tremendous effort. Where does it all go? (d) When I become rich, I can begin to help friends then. Right now, I will spend only on myself.	
	<p>Attempt ANY ONE of two extracts given. 2.A Some say the world will end in fire Some say in ice. From what I've tasted of desire I hold with those who favour fire. (Fire and Ice)</p>	5x1=5 marks

	<p>i. Which literary device has been used in 'I hold with those who favour fire'?</p> <p>(a) Simile (b) Assonance (c) Alliteration (d) Enjambment</p> <p>ii. How many predictions does the poet make for the ending of the world?</p>	
	<p>iii. What does 'Fire' symbolise according to the poet?</p> <p>(a) Desire (b) Avarice (c) Greed (d) All of these</p>	
	<p>iv. State whether the following statement is TRUE or FALSE: People think that the world is a beautiful place to live in.</p>	
	<p>v. What is the poet's opinion about the world?</p> <p>(a) The poet feels that a man should fulfil all his desires. (b) He think that we should control our growing desires. (c) He feels that we should live life to the full. (d) He says that one should live the life of an ascatic</p>	
	OR	
	<p>2.B Belinda tickled him, she ticked him unmerciful, Ink, Blink and Mustard, they rudely called him Percival, They all sat laughing in the little red wagon At the realio, trulio, cowardly dragon. (The Tale of Custard...)</p>	5x1=5 marks
	<p>i. Who was tickled by Belinda?</p>	
	<p>ii. Why did she tickle 'him'?</p> <p>(a) To make him happy (b) To bite him (c) To make fun of him (d) To mistreat him</p>	
	<p>iii. Who are Ink, Blink and Mustard?</p> <p>(a) Belinda's friend (b) Belinda's pet (c) Belinda's neighbour (d) None of these</p>	
	<p>iv. Why did they all laugh at 'him'?</p> <p>(a) He was a coward (b) He was childish (c) He was too ugly (d) He wore makeup</p>	
	<p>v. Fill in the blank with ONE WORD only. All other pets were _____ to the dragon.</p>	
VI.	<p>Answer ANY FOUR of the following in about 40-50 words each.</p>	4x3=12
	<p>i. What was the effect of hailstones on Lencho's crop ? (A Letter to God)</p>	
	<p>ii. Young seagull tried to fly but he could not. Why was he afraid to fly ? (Two Stories About Flying)</p>	

	iii. Why should the tiger snarl around houses at the edge of the forest ? (A Tiger in the Zoo)	
	iv. What makes Chubukov misunderstand the purpose of Lomov's visit? (The Proposal)	
	v. "Money is external". What does the poet mean by this expression taken from 'The Ball Poem'?	
VII.	Answer ANY TWO of the following in about 40-50 words each.	2x3=6
	i. How did Ausable fool Max about the balcony? (The Midnight Visitor)	
	ii. Griffin's brilliance as a man of science fades before his darker traits. Comment. (Footprints Without Feet)	
	iii. What does Noodle tell Think-Tank about the books? (The Book that Saved the Earth)	
VIII.	Answer ANY ONE of the following in about 100-120 words.	6 marks
	<p>i. Gotami comes to Buddha praying to him to revive her dead son. Buddha asks her to bring a handful of mustard seeds from a house where no one has lost a child, husband, parent or friend. Through this simple act, Buddha communicates the most profound truth of life, not only to Gotami but also to the whole mankind. What is the truth that Buddha communicates? What lesson does Gotami learn? What changes would take place in a common man's life if that truth is understood? (The Sermon at Benares)</p> <p style="text-align: center;">Or</p> <p>ii. "Difficulties do come in our lives, but they are not there to stay forever." Comment on this statement with reference to the poem 'Fog' by Carl Sandburg.</p>	
IX.	Answer ANY ONE of the following in about 100-120 words.	6 marks
	<p>i. Albert Einstein said, 'The important thing is to never stop questioning.' Richard was a genius who proved this quote true. Justify. (The Making of a Scientist)</p> <p style="text-align: center;">Or</p> <p>ii. Give a brief character sketch of Mrs. Pumphrey. What values are reflected through her character? (A Triumph of Surgery)</p>	
	The End	